

M42 (NGC 1976) – 29/12/2012

Telescopio o obiettivo di acquisizione (Imaging telescope or lens): Rifrattore ED (ED refractor) Tecnosky Carbon Fiber 80mm f/7

Camera di acquisizione (Imaging camera): CCD Atik 314L+ B/W [6.45 μm]

Montatura (Mount): SkyWatcher NEQ6

Telescopio o obiettivo di guida (Guiding telescope or lens): Newton SkyWatcher BlackDiamond 150 mm f/5

Camera di guida (Guiding camera): Magzero MZ-5m B/W [5.2 μm]

Riduttore di focale (Focal reducer): riduttore/spianatore 0.8x (0.8x reducer/field flattener)

Software (Software): IRIS + Adobe Photoshop CS3/CS6

Accessori (Accessories): non presente (not present)

Filtri (Filter): Astronomik CCD H α 13nm

Risoluzione (Resolution): 1391 x 1039 (originale, ciascuna/original, each), 3640 x 1039 (finale/final)

Data (Date): 29/12/2012

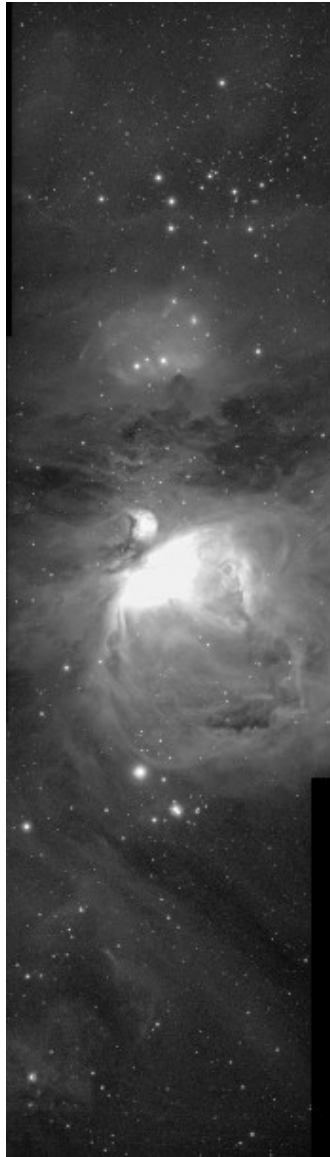
Luogo (Location): Sormano – CO, Italia (Italy)

Pose (Frames): 5 x 1020 sec bin 1x1 H α a/at -19.9°C, 4 x 1020 sec bin 1x1 H α a/at -19.9°C, 4 x 1020 sec bin 1x1 H α a/at -19.9°C.

Calibrazione (Calibration): 4 x 1020 sec dark H α a/at -19.9°C, 50 bias H α a/at -19.9°C, 50 flat H α a/at -19.9°C.

Fase lunare media (Average Moon phase): 95%

Note (note): mosaico di tre immagini (three frames mosaic)



M42 (NGC 1976) -
29/12/2012

Per scaricare i file originali in formato FIT [clicca qui](#)
(password richiesta) / [Click here](#) in order to download the
original files in FIT format (password request)