

Sh2 264 – 29/11/2016

Telescopio o obiettivo di acquisizione (Imaging telescope or lens): Canon EF 100 mm f/2.8 L IS USM Macro a/at f/2.8

Camera di acquisizione (Imaging camera): Canon EOS 40D (filtro LPF2 rimosso / LPF2 filter removed) [5.7 μ m]

Montatura (Mount): iOptron StarTracker

Telescopio o obiettivo di guida (Guiding telescope or lens): non presente (not present)

Camera di guida (Guiding camera): non presente (not present)

Riduttore di focale (Focal reducer): non presente (not present)

Software (Software): PixInsight 1.8 + Adobe Photoshop CC2017 + Topaz DeNoise 6

Accessori (Accessories): non presente (not present)

Filtri (Filter): Astronomik UHC-E EOS clip

Risoluzione (Resolution): 3888 x 2592 (originale/original), 3908 x 2602 (finale/final)

Data (Date): 29/11/2016

Luogo (Location): Assergi – AQ, Italia (Italy)

Pose (Frames): 53 x 150 sec at/a 1600 ISO.

Calibrazione (Calibration): 56 dark, 53 bias, 53 flat

Fase lunare media (Average Moon phase): 0.3%

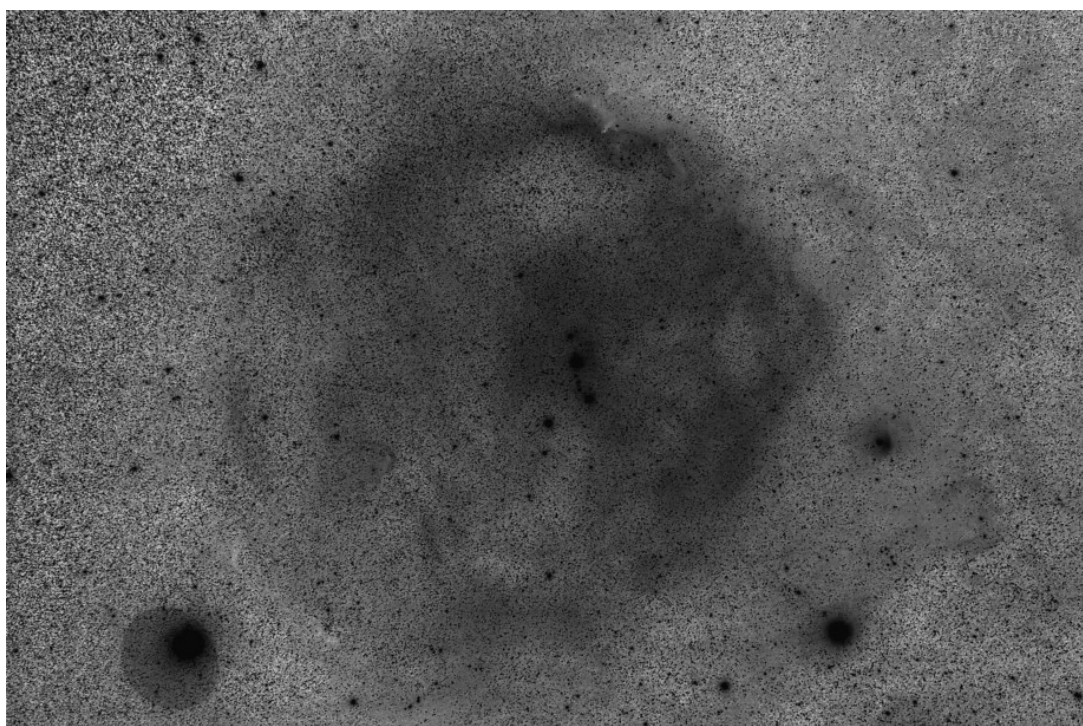
Campionamento (Pixel scale): 11.78 arcsec/pixel

Focale equivalente (Equivalent focal length): 100 mm

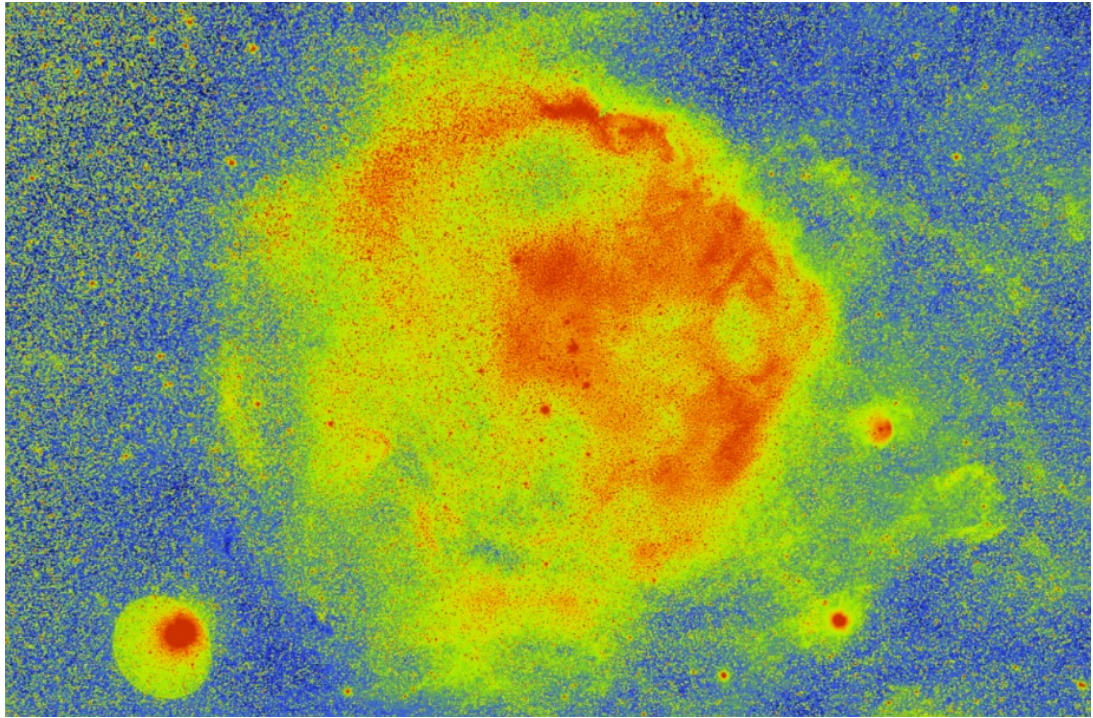
Note (note):



Sh2-264 - 29/11/2016



Sh2-264 - 29/11/2016 B/W invertito



Sh2 264 - 29/11/2016 falsi colori