

# Sh2 264 – 29/11/2016

**Telescopio o obiettivo di acquisizione (Imaging telescope or lens):** Canon EF 100 mm f/2.8 L IS USM Macro a/at f/2.8

**Camera di acquisizione (Imaging camera):** Canon EOS 40D (filtro LPF2 rimosso / LPF2 filter removed) [5.7  $\mu$ m]

**Montatura (Mount):** iOptron StarTracker

**Telescopio o obiettivo di guida (Guiding telescope or lens):** non presente (not present)

**Camera di guida (Guiding camera):** non presente (not present)

**Riduttore di focale (Focal reducer):** non presente (not present)

**Software (Software):** PixInsight 1.8 + Adobe Photoshop CC2017 + Topaz DeNoise 6

**Accessori (Accessories):** non presente (not present)

**Filtri (Filter):** Astronomik UHC-E EOS clip

**Risoluzione (Resolution):** 3888 x 2592 (originale/original), 3908 x 2602 (finale/final)

**Data (Date):** 29/11/2016

**Luogo (Location):** Assergi – AQ, Italia (Italy)

**Pose (Frames):** 53 x 150 sec at/a 1600 ISO.

**Calibrazione (Calibration):** 56 dark, 53 bias, 53 flat

**Fase lunare media (Average Moon phase):** 0.3%

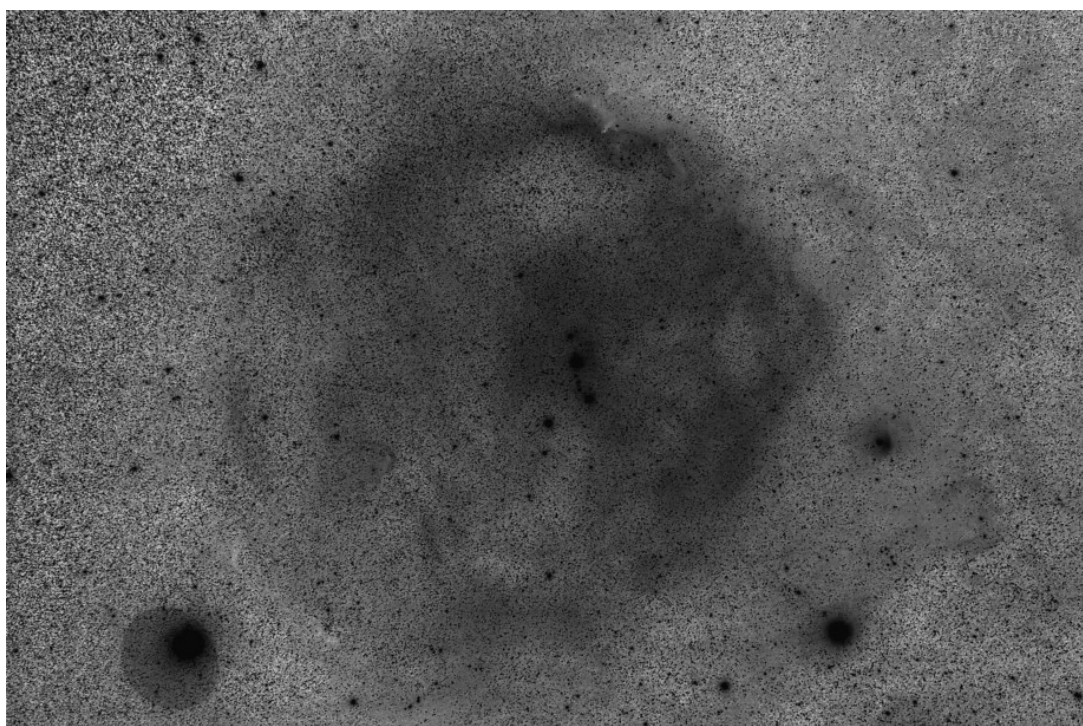
**Campionamento (Pixel scale):** 11.78 arcsec/pixel

**Focale equivalente (Equivalent focal length):** 100 mm

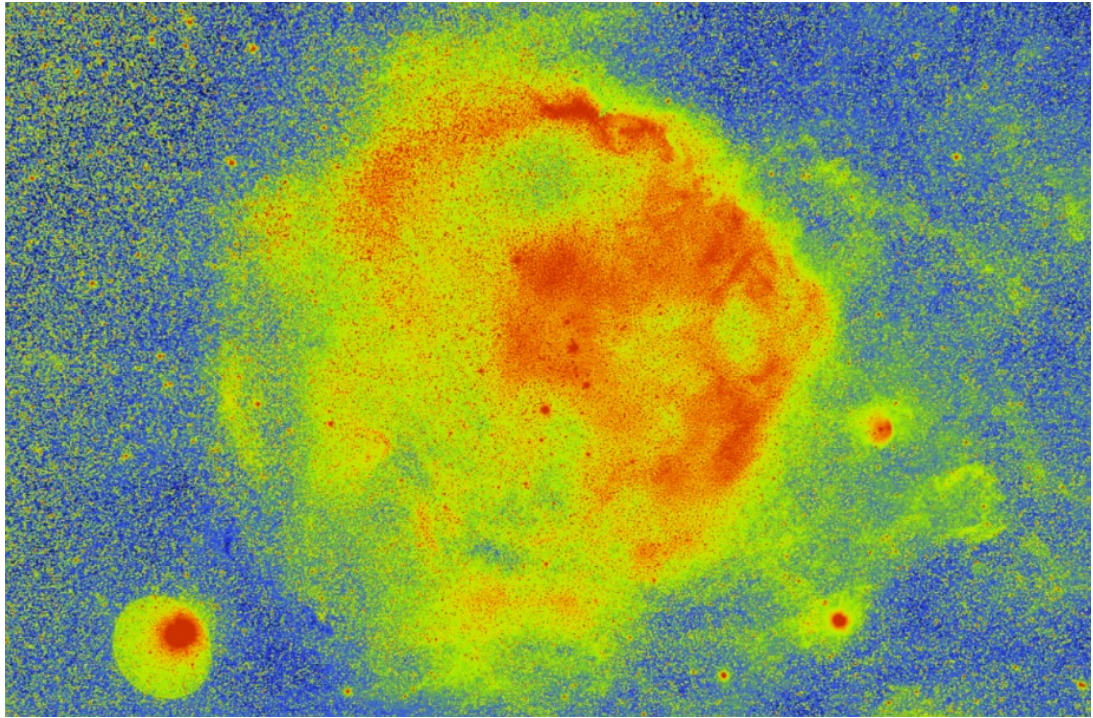
**Note (note):**



Sh2-264 - 29/11/2016



Sh2-264 - 29/11/2016 B/W invertito



Sh2 264 - 29/11/2016 falsi colori